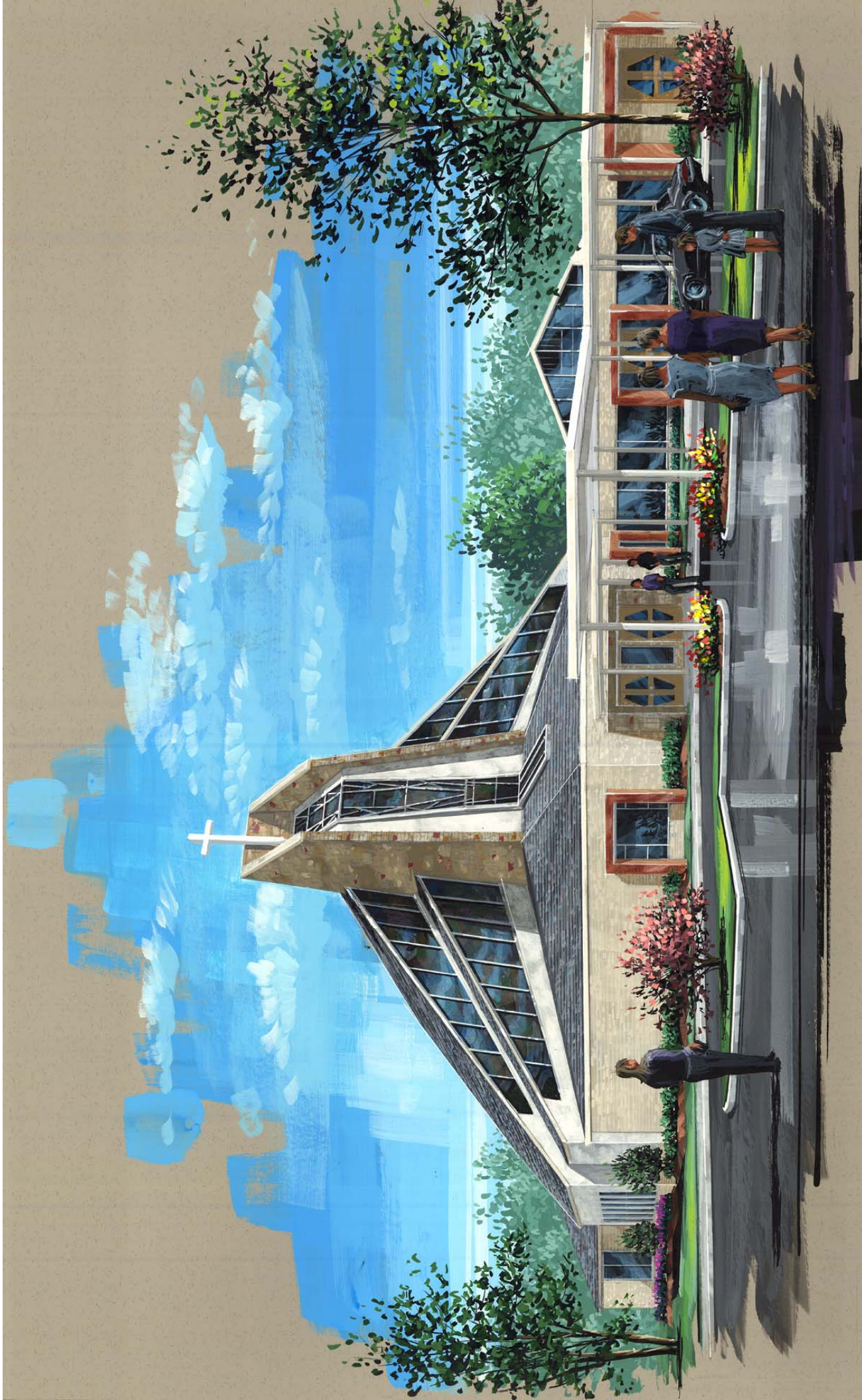


*“Growing Together in Christ”*



*Our Lady Queen of Peace Parish  
Grafton, Ohio*

November 2007

Dear Members of Our Lady Queen of Peace Parish,

The last few years have been an exciting and challenging time in the history of the Catholic community in Grafton/LaGrange and surrounding areas. We studied how we could respond to the challenges of a growing population and subsequent increase in parishioners, a decline in available priests, limited seating in the present worship spaces and the financial responsibilities of running two parishes within a mile of each other. Another factor was the witness value of one unified Catholic community. These factors that we face as a Church in this area resulted in the merging of Assumption and Immaculate Conception parishes into the parish of Our Lady Queen of Peace on October 29, 2006. This was not only a historically significant event for us but for the entire Diocese of Cleveland as we became a model parish for the Vibrant Parish Life program that is currently taking place.

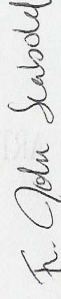
In the past year we have grown together as a faith community. The number of ministries and opportunities for parish involvement has increased. We have been able to reach out to people and to the local community in ways that we were not able to before due to our working together. Spiritually we have grown as well with more liturgical opportunities. In responding to the challenges of our day we have grown into a more vibrant parish family.

After much careful study and prayer we are embarking on this next phase of our journey which is to build a new worship space where we can come together as one community around the Eucharistic table. This will enable us to not only grow as a community but will ensure that there will be locally a strong Roman Catholic presence for generations to come. The faith that has been passed down to us was formed out of great sacrifice and a vision for the future. As recipients of this faith we are challenged to keep the flame of faith alive for our children's children and beyond.

I am confident that this is both a wise and vital investment. It will require a sacrifice on the part of every member of the parish in order to make our vision for the parish a reality. My hope is that our parish family will prayerfully receive and support this project as a visible sign of your faith and a way to grow together to form a more vibrant faith community to last for generations.

Please pray for the guidance of the Holy Spirit, and dedicated to the Blessed Mother, may we seek her intercession in this endeavor and join in the spirit of sacrifice by supporting the "Growing Together in Christ" campaign so that we may meet the needs of our growing community.

Sincerely Yours in Christ,



Rev. John P. Seibold

Pastor

## ***“Growing Together in Christ”***

### **Prayer for the Church in Transition**

O faithful God, as your people, we cherish our memories and our history as a sacred gift. We also ask you to guide us in our time of transition. We need your wisdom that we might be receptive to change, conversion and growth. We need your grace to redirect our hearts that we may be willing to offer ourselves in joyful service.

Do not allow fear, ignorance or pride to limit the work of your spirit, nor custom to prevent the creativity within us from bearing fruit. Open our hearts to the call of the Gospel. Give us courage and renewed hope that we may meet the challenge of being the Church in our time. Amen.

#### **As we prepare to make our transition, we plan to:**

- Be** good stewards of all that has been entrusted to us
- Responsibly** manage the maintenance and operating costs of our existing buildings
- Utilize** the Elm Street hall for rental income (until that property is sold)
- Conduct** parish operations at the Elm Street Parish Office (until that property is sold)
- Host** parish functions primarily in the Erie Street hall

## *Parish Master Plan*

Coming together as one parish from two in 2006, Our Lady Queen of Peace has become one family, sharing and leaning on each other, making the sacrifices necessary for us to continue to thrive as a Catholic community in the growing Grafton/LaGrange community. We have come together in name, and in order to complete our transition we need to gather together as one at the Lord's Table.

Our parish's Building Committee has taken on the responsibility of conducting a comprehensive needs assessment of the parish facilities and formulating a long-range master plan to meet our current and future facility needs. All of our parishioners have been consulted during this process, and town hall meetings were held for all parishioners so that we could determine what steps we need to take to complete our transition. A long-range Master Plan has been developed incorporating the feedback provided:

### **Phase I**

At the center of our parish life is the Liturgy. We seek to create a beautiful church that can accommodate 600 for Mass. The church experience we envision will allow us to comfortably hold all those who currently participate in a weekend Mass while still maintaining the warm atmosphere our current churches offer. Provisions are being made to make the church "expandable" to 800 seats should it become necessary in the future.

The design of our new church reflects the uniqueness of our parish family. Sandstone will be incorporated into the structure, with glass planned throughout to allow light to flood the interior spaces. A beautiful tower will reach to the sky, symbolically calling us to prayer and making all who enter or pass by aware that we are a vital Catholic community.

We will strive to maximize the accessibility of our church complex: a new driveway is planned that will make it possible to access the parking lot from Main Street as well as Erie Street; a covered drop off and handicap parking will facilitate entry into the building; ample handicap seating will be integrated with pew seating; an accessible ramp will assist physically challenged individuals to the Altar; and the sound system will provide an acoustical quality that makes it possible to clearly hear our music ministry and spoken words.

A Baptismal Font will be located directly below the tower, symbolically confronting each of us with the waters of baptism as we enter the worship space. Seating will be configured so that Mass participants are as close to the Altar as possible. We will enter this sacred space through a Gathering Area that welcomes parishioners and visitors and provides us with opportunities for fellowship before and after Mass.

## **Phase I– Continued**

A Heritage Room is planned to celebrate the history of the former Immaculate Conception and Assumption Parishes. It will double as a Bride’s Room. A Cry Room, Eucharistic Chapel, Reconciliation Chapel, Rest Rooms, & Storage will be designed to meet the needs of all of our members, groups and ministries. Elements of both current churches will be incorporated into our design, so that our new church will feel like an old friend.

After much discussion and study, the Erie Street property has been chosen as the location for our new church, primarily because of its accessibility, its visibility to the community, and the marketability of the Elm Street Property. The Building Committee continues to explore the best possible use for the current church and rectory buildings on Erie Street– the church could be used as a daily chapel and for special occasions such as weddings, funerals, and other intimate liturgies.

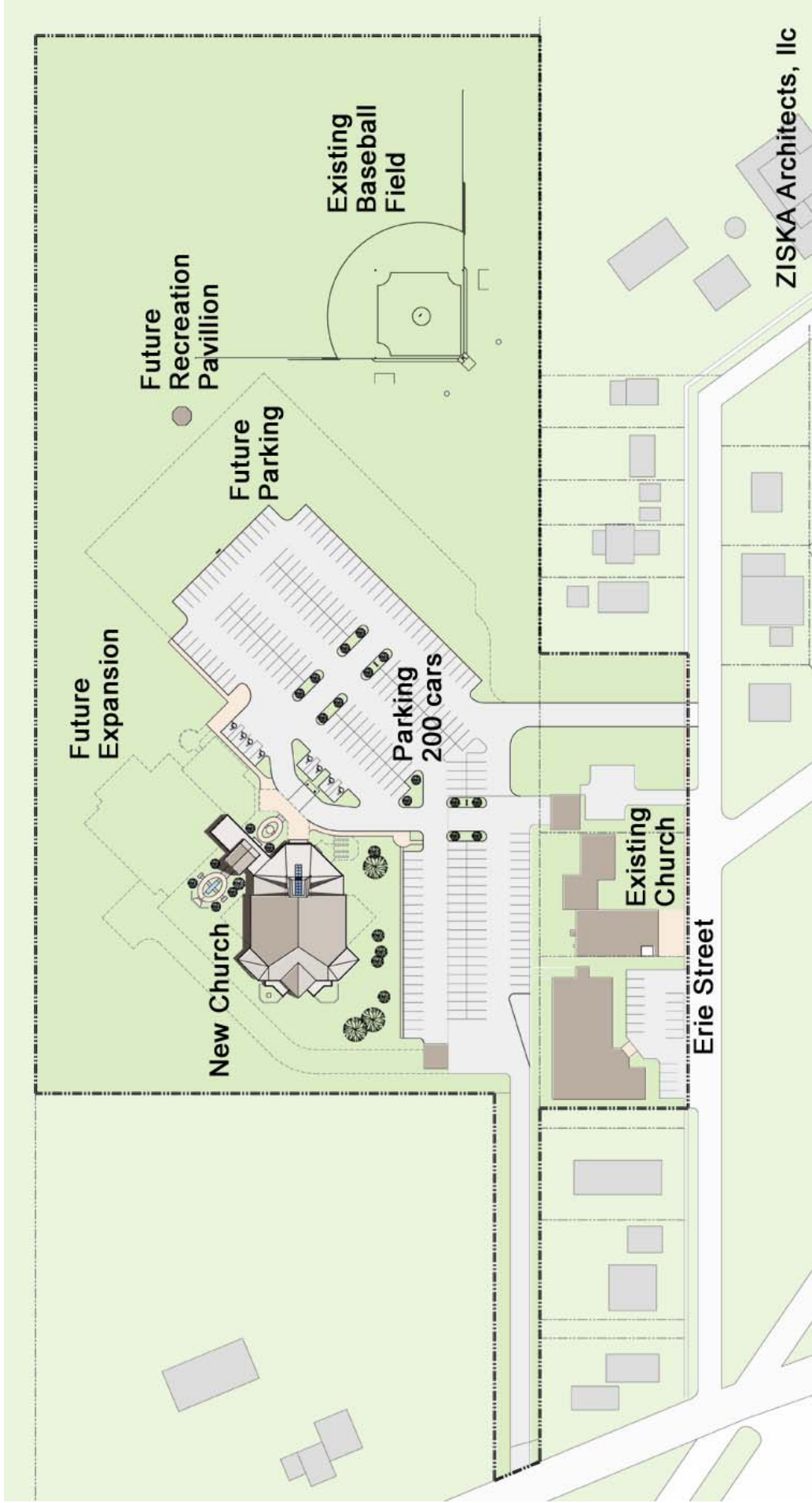
The budget for Phase I has been set at \$3.1 million, with funding to be provided through a combination of capital campaign pledges, savings, and commercial financing (mortgage). The responses to our recent planning study indicate that our parish has the ability to raise \$900,000 or more in support of this phase. All those who make Our Lady Queen of Peace their spiritual home are asked to consider a sacrificial gift to enable us to surpass this amount so that we may move into the second phase of our Master Plan.

## **Phase II & Phase III Objectives**

During the second phase of our Master Plan we will create an addition to the new church that will serve as new parish offices and include two meeting rooms. The success of fundraising and timing of the sale of the Elm Street property will determine the timing for implementing this phase. The existing rectory will serve as the residence for our pastor and hopefully a retired priest.

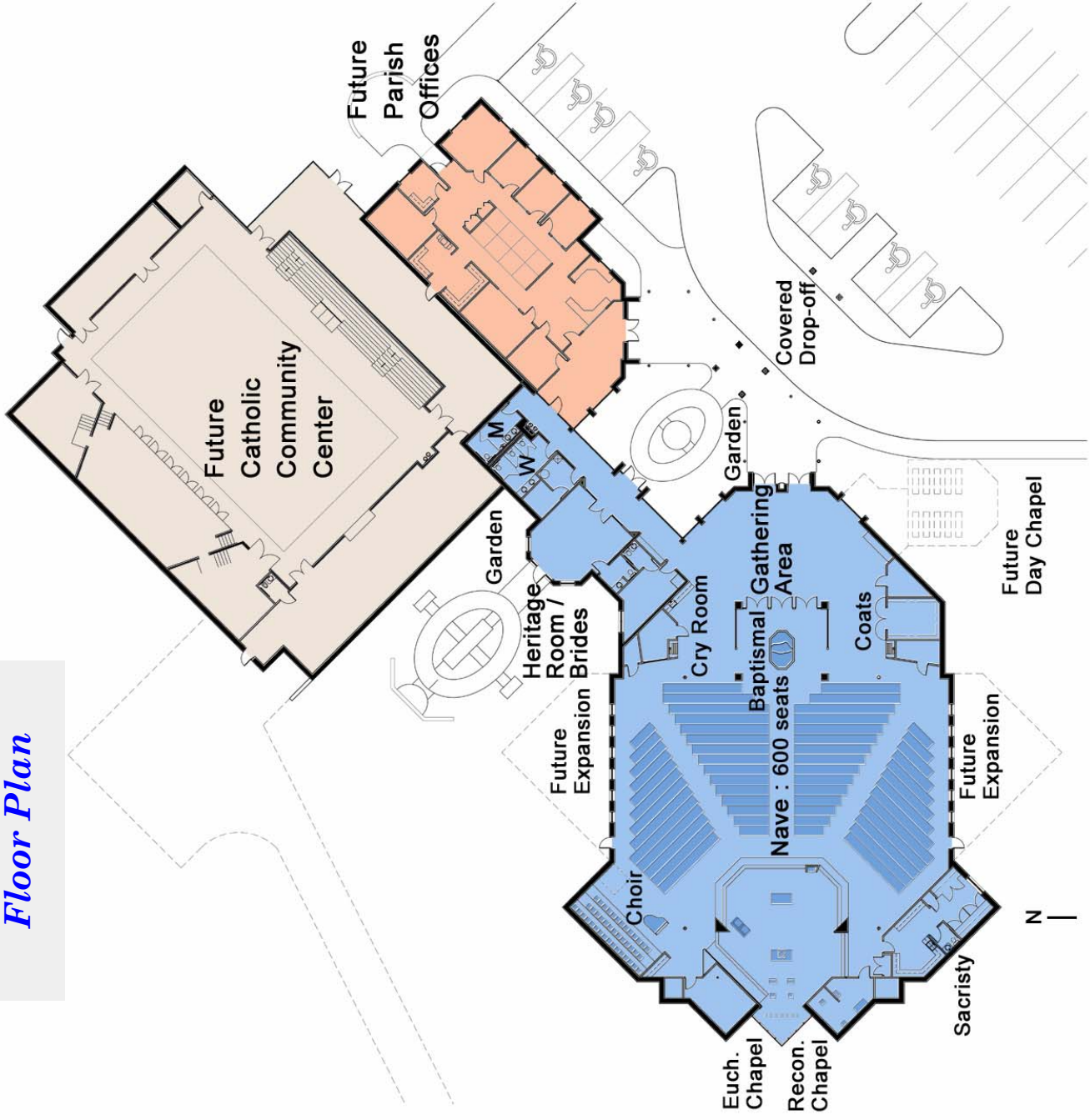
Phase III of the Master Plan includes the creation of a Catholic Community Center that will include a multipurpose space to accommodate 300 persons for banquets and receptions, and that is adaptable for youth and adult recreation. Phase III construction will begin only after Elm Street properties are sold .

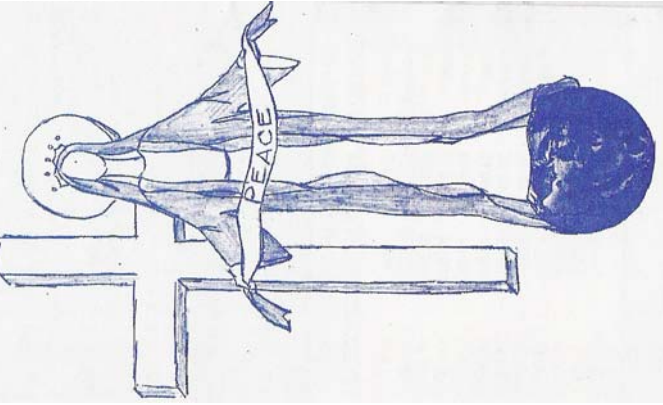
*Our Lady Queen of Peace Church Complex*



*Site Plan*

*Floor Plan*





## *Growing Together in Christ*

Every parish family is strongly encouraged to make a contribution of time, talent and treasure to our campaign so that we can break ground for Phase I as soon as possible. We are confident that with a sacrifice from all of our parishioners, together we can reach our goals. Every family is asked to invest in the future life of our parish by making a pledge that is payable for up to a three-year period.

Each of us has unique financial circumstances; therefore it is a personal decision when determining how much to contribute. The following gift chart provides a few examples of how timing pledge payments can help to achieve different pledge amounts. Please keep in mind these are examples, that actual pledge amounts can be above or below these levels, and that you can structure your gift and make payments in a manner that best suits your situation.

Pledge Amount	3 Annual Payments	12 Quarterly Payments	36 Monthly Payments	Daily Sacrifice
\$100,000	\$ 33,333	\$ 8,333	\$ 2,778	\$ 92.60
\$ 50,000	\$ 16,667	\$ 4,167	\$ 1,389	\$ 46.30
\$ 25,000	\$ 8,333	\$ 2,083	\$ 694	\$ 23.15
\$ 10,000	\$ 3,333	\$ 833	\$ 278	\$ 9.26
\$ 5,000	\$ 1,667	\$ 417	\$ 139	\$ 4.63
\$ 3,600	\$ 1,200	\$ 300	\$ 100	\$ 3.33

### ***\*Please Keep in Mind\****

- Our campaign is based on **“Equal Sacrifice, not Equal Giving.”** Every pledge and one-time gift will be gratefully accepted in the spirit it is given. Emphasis is placed on pledging over a three-year period so each family has the opportunity to provide the highest possible level of support.
- A 10% down payment is suggested, but not required to begin a pledge.
- Please make checks payable to: **“Our Lady Queen of Peace Building Fund”**
- Pledge payments will be kept separate from regular offertory contributions for daily operations.
- All gifts are confidential.

## *Your Gift as a Living Memorial*

To publicly recognize all donors, a commemorative memorial display is planned that will serve as a lasting reminder of your commitment to the parish for generations to come. Everyone who contributes to the campaign will be given the opportunity to memorialize their gift in the name of the family or of a loved one. Gifts can also be made anonymously.

### SPECIAL MEMORIAL OPPORTUNITIES

The following items are available as special memorial opportunities on a first come, first serve basis. Those who are interested in memorializing any of these items are asked to contact the parish office.

Altar	Eucharistic Chapel
Accessible Altar Ramp	Gathering Area
Ambo	Heritage Room / Bride's Room
Baptismal Font	Piano
Tower	Reconciliation Chapel
Tower Cross	Sacristy
Contemplative Garden (2)	Sound System
Cry Room	Stained Glass Windows

***“Everyone must give according to what he or she has inwardly decided;  
not grudgingly, for God loves a cheerful giver.***

***God can multiply his favors among you so that you will always  
have enough of everything and even a surplus for good works.***

***St. Paul (2 Cor. 9:7-8)***

## ***Tax Advantages of Charitable Giving***

All contributions to the this campaign are tax deductible as provided under IRS guidelines. Contact the parish office at 440-926-2364 to be referred for help on these or any other special considerations:

**Transfer of Securities** If appreciated securities that have been held more than 12 months are contributed, no capital gains tax is due and a charitable deduction for the full fair market value may be realized.

**Matching Gift Programs** Many companies offer this type of program to their employees, and sometimes retirees, as a way to encourage charitable giving. Matching Gift Programs provide an opportunity to double or even triple the size of your pledge! Contact the Human Resources office of your employer to find out if a program is offered and whether you qualify. Ask for the appropriate form, complete the donor portion, and then forward that form with your pledge.

**Contributions from an IRA** Effective until December 31, 2007, recent pension legislation enables certain individuals to rollover amounts from an individual retirement account (IRA) directly to a charity without recognizing the assets transferred as income. The donor must be 70-1/2 or older. The amount transferred to the charity is limited to \$100,000 per year.

**Property or Other Valuables** Donations of property or items with a tangible re-sale value may be acceptable.

## ***Your Timely Response is Requested!***

All parish families are receiving this brochure that outlines the goals and objectives for the campaign. Your timely response with a sacrificial offering is greatly appreciated. Please respond by returning a pledge form to the parish office or the Sunday Collection as soon as possible. A response within a week of your receiving this brochure will help to build momentum for the campaign and greatly assist in attaining the campaign goal.

**“Commitment Weekend” will take place on December 15th & 16th.**  
**All who respond by this time will not be re-contacted.**

## *Frequently Asked Questions*

**Q:** When will we be able to break ground?

**A:** *We hope to break ground for the new church in the spring of 2008. This timing will be determined by the success of the Capital Campaign.*

**Q:** Will we be able to raise enough money to get started?

**A:** *The feedback that our parish family has given during the preliminary planning process has been positive and supportive of the master plan. We seek to secure a minimum of \$900,000 in pledges prior to moving forward with Phase I. The generosity of our parish family will determine how quickly we reach that point. Campaign pledge payments will be deposited in the Our Lady Queen of Peace Building Fund and used solely for the new church and related expenses.*

**Q:** Am I being asked to make a pledge above and beyond what I currently give in the Sunday Offertory?

**A:** *Yes. Weekly donations to the parish allow us to cover day-to-day operating expenses and support our parish groups and ministries. A pledge to this campaign will be used to build God's house!*

**Q:** What are the plans for the Erie Street Church and Rectory buildings?

**A:** *The Building Committee and Finance Council continue to explore options for the best use of these buildings. Campaign funds will not be used for existing buildings, and the general operating funds that are budgeted for them will only be for routine and preventative maintenance. The committee did consider renovating the rectory into office space, but this alternative proved to be cost prohibitive.*

**Q:** Where will the tabernacle be located? Will we have kneelers?

**A:** *The Diocese of Cleveland has mandated that parishes building new churches locate the tabernacle in the Sanctuary, and that kneelers be installed.*

**Q:** What items from our current church buildings will be part of the new church?

**A:** *A list of current items that will be utilized in the new church is being developed. It will incorporate the ideas our parishioners have brought forward. Please contact the committee with any suggestions.*

***The Campaign Leadership Committee***  
thanks the Our Lady Queen of Peace  
Parish Family for generously sharing your  
time, talent and treasure to make us  
a vibrant Catholic community as we are  
***Growing Together in Christ.***

***Rev. John P. Seabold***, Pastor

***Mary Hempfling***, General Co-Chairperson

***Jim Jaskowiak***, General Co-Chairperson

***Alan Gauvreau***, Major Gift Chairperson

***Joe T. Filipiak***, Advance Gift Co-Chairperson

***Ray & Margie Toombs***, Advance Gift Co-Chairpersons

***Tami Lynsky***, Volunteer Recruitment Co-Chairperson

***Joanie Ward***, Volunteer Recruitment Co-Chairperson

***Ziska Architects & Associates, Ilc***, Architects

***Fred Roberts***, Trinity Consultants

For more information, visit our parish web site:  
***[www.ourladyqueenofpeacegrafton.org](http://www.ourladyqueenofpeacegrafton.org)***

